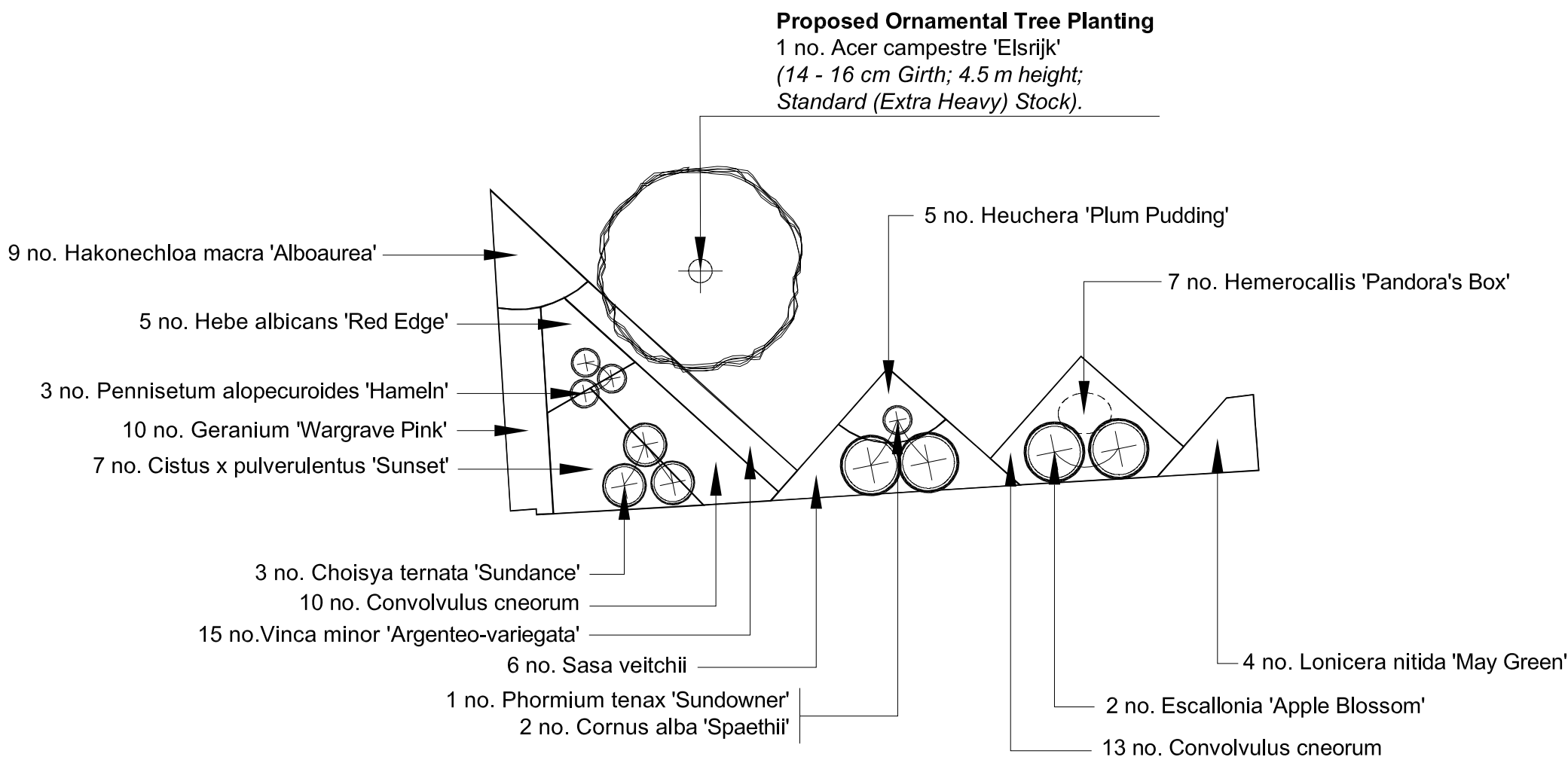
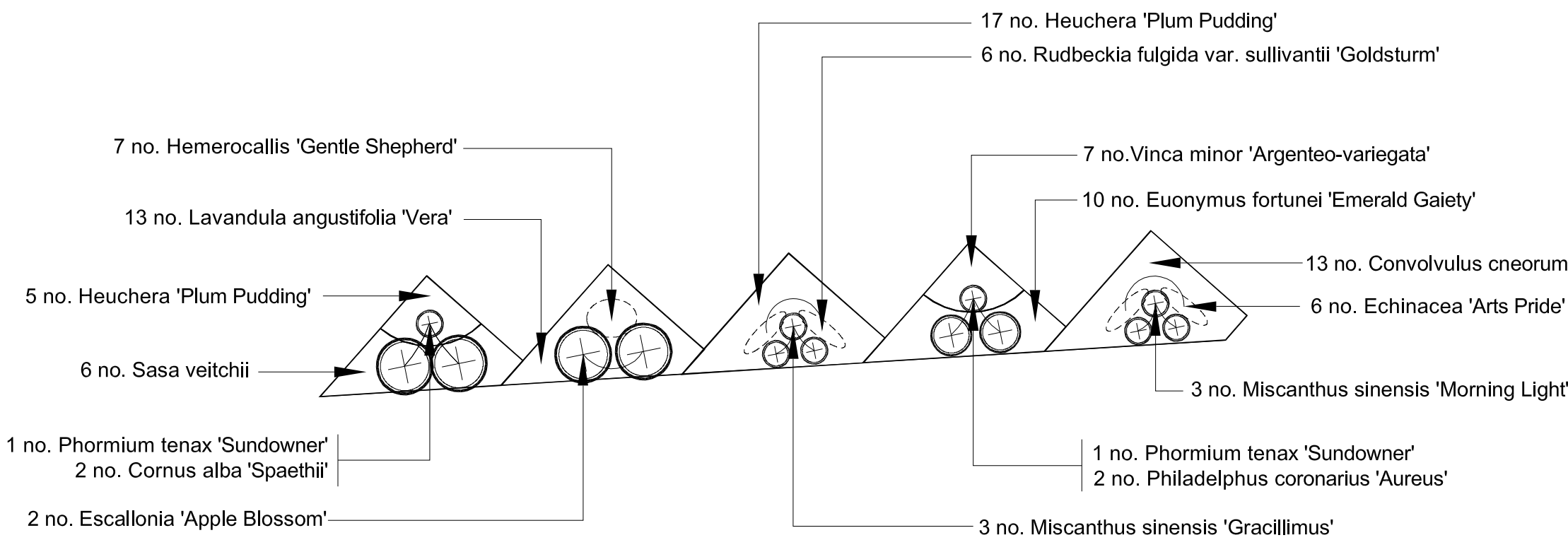


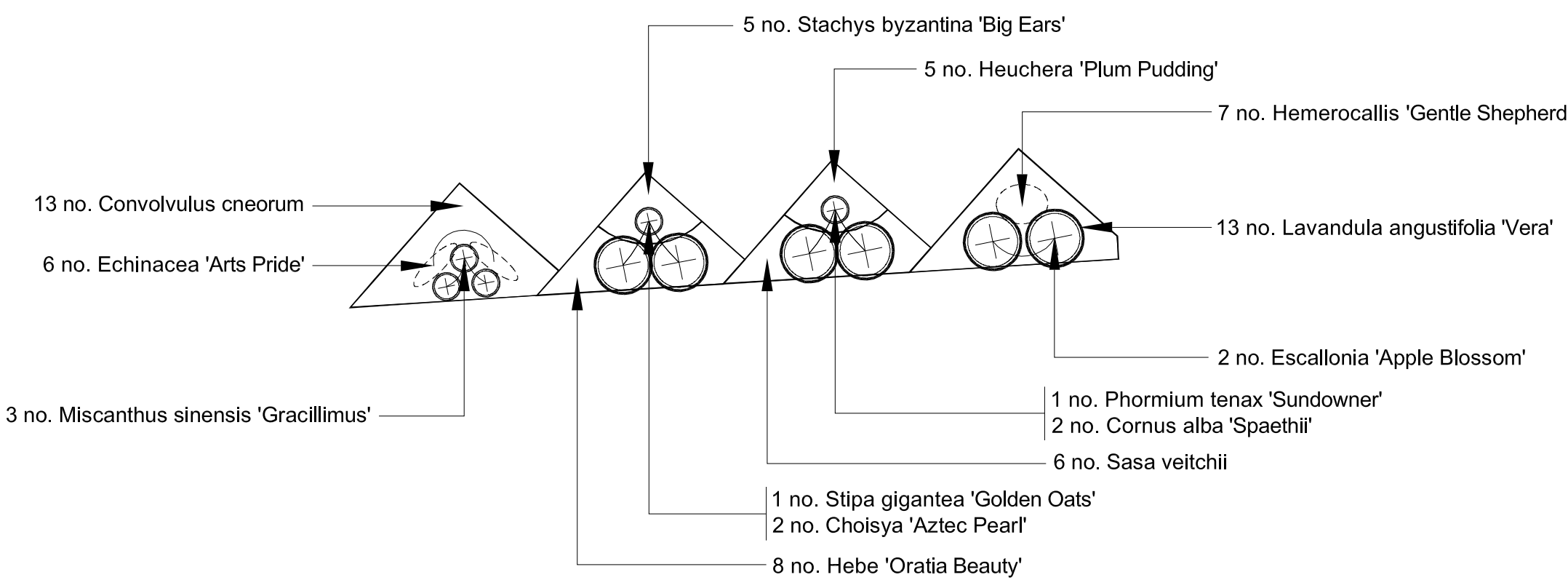
Planting Area No. 10



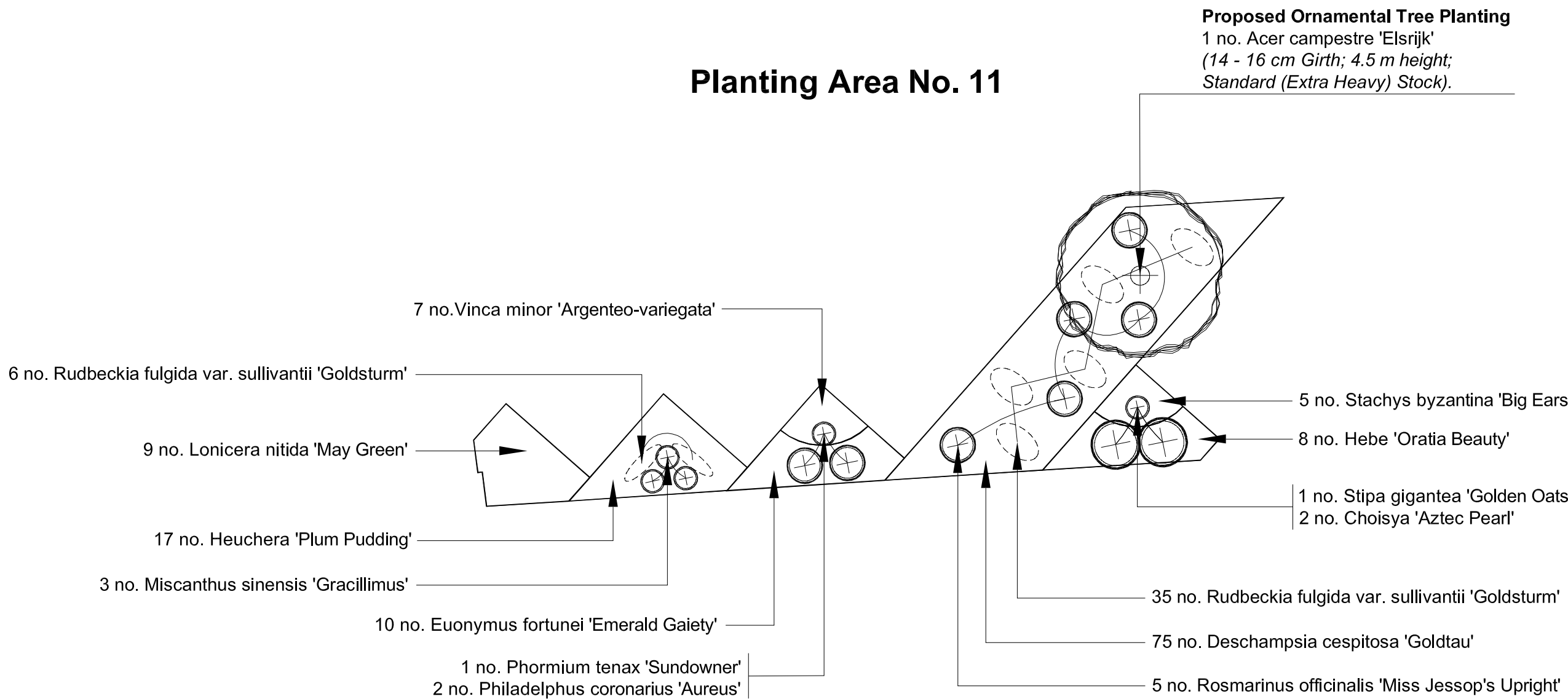
Planting Area No. 12



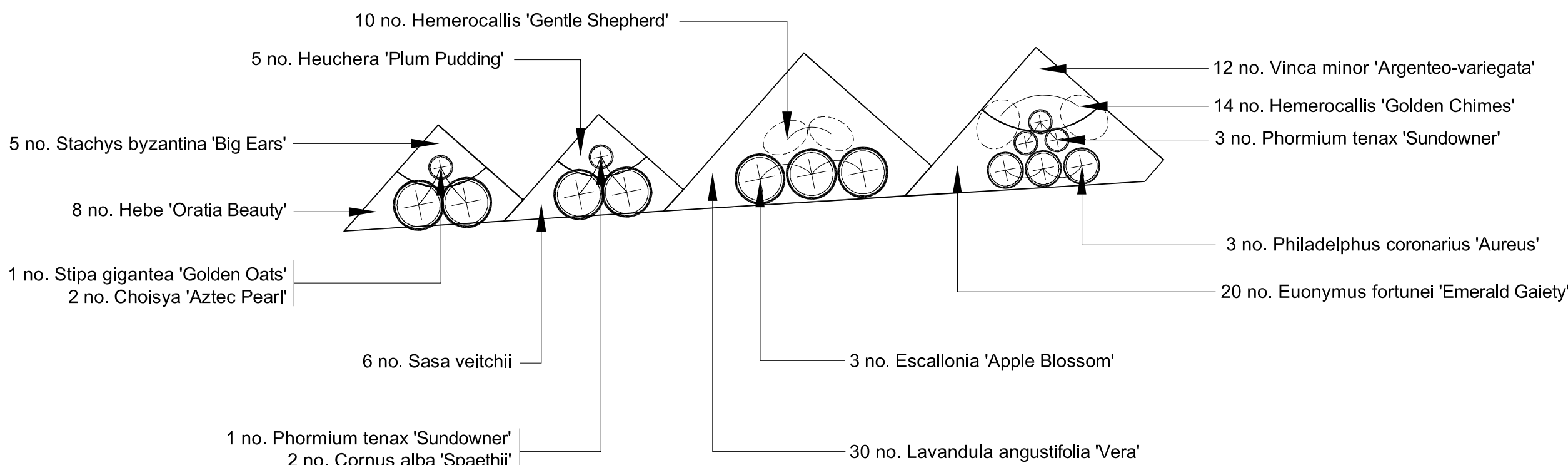
Planting Area No. 14



Planting Area No. 11



Planting Area No. 13



Legend

Proposed - Replacement Tree Planting (Semi-Mature)
20 x 25 cm girth size; minimum 4.5m height; Semi-Mature Nursery Stock; trees to have underground girding. (Refer to LLD754/12 Soft Landscape Layout, LLD754 Detailed Plant Schedule & Planting Specification, LLD754/16 Detail - Tree Pit and LLD754 NBS - Hard & Soft Landscape Specification).

Proposed - Native Tree Planting (Standard)
14 x 16 cm girth size; minimum 4.5m height; Standard (Extra Heavy) Nursery Stock; trees to be single staked. (Refer to LLD754/12 Soft Landscape Layout, LLD754 Detailed Plant Schedule & Planting Specification and LLD754 NBS - Hard & Soft Landscape Specification).

Proposed - Ornamental Tree Line Planting (Standard Extra Heavy)
14 x 16 cm girth size; 4.5m height; Standard (Extra Heavy) Nursery Stock; trees to be long double staked. (Refer to LLD754/12 Soft Landscape Layout, LLD754 Detailed Plant Schedule & Planting Specification, LLD754/16 Detail - Tree Pit and LLD754 NBS - Hard & Soft Landscape Specification).

Proposed - Native Mixed Species Boundary Hedge/row Planting
Proposed mixed-species native boundary hedge/row planting areas to be bare-root stock; 60 - 80 cm height; 2 no. staggered rows set 400 mm apart; planted at 400 mm centres. Hedge planting areas to be minimum 400 mm depth subsoil overlaid with a minimum of 450 mm depth of Multi-Purpose Topsoil to BS 3882:2015. Topsoil to be tested and certified by a Soil Scientist. All hedge planting areas to be mulched with 75 mm depth of Ornamental Bark Mulch. (Refer to LLD754/12 Soft Landscape Layout, LLD754 Detailed Plant Schedule & Planting Specification and LLD754 NBS - Hard & Soft Landscape Specification).

Proposed - Native Single Species Boundary Hedge/row Planting
Proposed single-species native boundary hedge/row planting areas to be bare-root stock; 60 - 80 cm height; 2 no. staggered rows set 400 mm apart; planted at 400 mm centres. Hedge planting areas to be minimum 400 mm depth subsoil overlaid with a minimum of 450 mm depth of Multi-Purpose Topsoil to BS 3882:2015. Topsoil to be tested and certified by a Soil Scientist. All hedge planting areas to be mulched with 75 mm depth of Ornamental Bark Mulch. (Refer to LLD754/12 Soft Landscape Layout, LLD754 Detailed Plant Schedule & Planting Specification and LLD754 NBS - Hard & Soft Landscape Specification).

Proposed - Ornamental Single Species Hedge/row Planting
Proposed single-species ornamental hedge/row planting areas to be 60 - 80 cm height; single row planted at 400 mm centres. Hedge planting areas to be minimum 300 mm depth subsoil overlaid with a minimum of 450 mm depth of Multi-Purpose Topsoil to BS 3882:2015. Topsoil to be tested and certified by a Soil Scientist. All hedge planting areas to be mulched with 75 mm depth of Ornamental Bark Mulch. (Refer to LLD754/12 Soft Landscape Layout, LLD754 Detailed Plant Schedule & Planting Specification and LLD754 NBS - Hard & Soft Landscape Specification).

Proposed - Native Understorey Shrub Planting & Native Hedge/row Planting
Proposed native mixed-species understorey shrub planting and native hedge/row planting to be 60 - 80 cm height; Multi-Branched; set at 1000 mm centres; planted in random groups of 2-5 plants. Planting areas to be minimum 300 mm depth subsoil overlaid with a minimum of 450 mm depth of Multi-Purpose Topsoil to BS 3882:2015. Topsoil to be tested and certified by a Soil Scientist. Hedge/row willflower grassland to be seeded with EM1 - Hedge/row Mixture supplied by Ecovagat. Seeds, or equal and approved. Areas of bare ground to be seeded with willflower grassland mixture on completion. Planting areas are not to be subject to any soil additives, amendments or conditions. (Refer to LLD754/12 Soft Landscape Layout, LLD754 Detailed Plant Schedule & Planting Specification and LLD754 NBS - Hard & Soft Landscape Specification).

Proposed - Willflower Grassland
Proposed native willflower grassland seeded areas to be minimum 300 mm depth of subsoil overlaid with a minimum of 100mm depth Low Fertility Spill/Purpose Topsoil to BS 3882:2015. Willflower areas are not to be subject to any soil additives, amendments or conditions. Willflower areas to be seeded with 'EM1 - Meadow Mixture for Chalk and Limestone Soils' supplied by Ecovagat. Seeds, or equal and approved. Areas of bare ground to be seeded with meadow mixture on completion. (Refer to LLD754/12 Soft Landscape Layout, LLD754 Detailed Plant Schedule & Planting Specification and LLD754 NBS - Hard & Soft Landscape Specification).

Proposed - Ornamental / Flowering Planting Areas
Proposed ornamental / flowering planting areas. Specimen shrubs and flowering accent planting. Planting areas to be minimum 300 mm depth subsoil overlaid with a minimum of 450 mm depth of Multi-Purpose Topsoil to BS 3882:2015. Topsoil to be tested and certified by a Soil Scientist. All planting areas to be mulched with 75 mm depth of Ornamental Bark Mulch. (Refer to LLD754/12 Soft Landscape Layout and LLD754 Detailed Plant Schedule & Planting Specification).

Proposed - Shrub / Groundcover Planting Areas
Proposed shrub/groundcover planting areas to be a minimum 300 mm depth subsoil overlaid with a minimum of 450 mm depth of Multi-Purpose Topsoil to BS 3882:2015. Topsoil to be tested and certified by a Soil Scientist. All planting areas to be mulched with 75 mm depth of Ornamental Bark Mulch. (Refer to LLD754/12 Soft Landscape Layout and LLD754 Detailed Plant Schedule & Planting Specification).

Proposed - Herbaceous Planting Areas
Proposed herbaceous planting areas to be a minimum 300 mm depth subsoil overlaid with a minimum of 450 mm depth of Multi-Purpose Topsoil to BS 3882:2015. Topsoil to be tested and certified by a Soil Scientist. All planting areas to be mulched with 75 mm depth of Ornamental Bark Mulch. (Refer to LLD754/12 Soft Landscape Layout and LLD754 Detailed Plant Schedule & Planting Specification).

Planting Notes:

- Soil to proposed planted and seeded embankment areas to be stabilised using a Geotextile.
- Geotextile: Geotextile to feature planting areas to be covered with 75mm depth ornamental bark mulch.

Tree Planting Tree Pit Sizes

- Standard (Standard): 1000 mm x 1000 mm x 600 mm depth.
- Standard (Extra Heavy): 1800 mm x 1800 mm x 750 mm depth.
- Semi-Mature: 2250 mm x 2250 mm x 1175 mm depth.

Staking

Standard (Standard) Trees to be single staked, 1 no. 2000 x 50 mm diameter timber stakes driven vertically into the ground to finish 300mm below base of pit. 1 no. per tree. Stakes to be cut level at 1000mm height and secured to the tree with 1 no. adjustable tie.

- Standard (Extra Heavy) Trees to be long double staked, 2 no. 2400 x 75 mm diameter timber stakes driven vertically into the ground to finish 300mm below base of pit. 2 no. per tree. Stakes to be cut level at 1000mm height and braced with timber crossbar.
- Semi-Mature trees planting to feature underground girding. (Refer to drawing LLD754/16 Detail - Tree Pit).

All staked trees:

- Tie: Adjustable tie.
- Tying: Secure tree firmly but not rigidly with a single tie centrally on brace for long double staking.

Notes:

Refer to the following documents:
LLD754 / 13-01, LLD754 / 13-02, LLD754 / 13-03, LLD754 / 13-04, LLD754 / 13-05, LLD754 / 13-06, LLD754 / 13-07, LLD754 / 13-08, LLD754 / 13-09, LLD754 / 13-10, LLD754 / 13-11, LLD754 / 13-12, LLD754 / 13-13, LLD754 / 13-14, LLD754 / 13-15, LLD754 / 13-16, LLD754 / 13-17, LLD754 / 13-18, LLD754 / 13-19, LLD754 / 13-20, LLD754 / 13-21, LLD754 / 13-22, LLD754 / 13-23, LLD754 / 13-24, LLD754 / 13-25, LLD754 / 13-26, LLD754 / 13-27, LLD754 / 13-28, LLD754 / 13-29, LLD754 / 13-30, LLD754 / 13-31, LLD754 / 13-32, LLD754 / 13-33, LLD754 / 13-34, LLD754 / 13-35, LLD754 / 13-36, LLD754 / 13-37, LLD754 / 13-38, LLD754 / 13-39, LLD754 / 13-40, LLD754 / 13-41, LLD754 / 13-42, LLD754 / 13-43, LLD754 / 13-44, LLD754 / 13-45, LLD754 / 13-46, LLD754 / 13-47, LLD754 / 13-48, LLD754 / 13-49, LLD754 / 13-50, LLD754 / 13-51, LLD754 / 13-52, LLD754 / 13-53, LLD754 / 13-54, LLD754 / 13-55, LLD754 / 13-56, LLD754 / 13-57, LLD754 / 13-58, LLD754 / 13-59, LLD754 / 13-60, LLD754 / 13-61, LLD754 / 13-62, LLD754 / 13-63, LLD754 / 13-64, LLD754 / 13-65, LLD754 / 13-66, LLD754 / 13-67, LLD754 / 13-68, LLD754 / 13-69, LLD754 / 13-70, LLD754 / 13-71, LLD754 / 13-72, LLD754 / 13-73, LLD754 / 13-74, LLD754 / 13-75, LLD754 / 13-76, LLD754 / 13-77, LLD754 / 13-78, LLD754 / 13-79, LLD754 / 13-80, LLD754 / 13-81, LLD754 / 13-82, LLD754 / 13-83, LLD754 / 13-84, LLD754 / 13-85, LLD754 / 13-86, LLD754 / 13-87, LLD754 / 13-88, LLD754 / 13-89, LLD754 / 13-90, LLD754 / 13-91, LLD754 / 13-92, LLD754 / 13-93, LLD754 / 13-94, LLD754 / 13-95, LLD754 / 13-96, LLD754 / 13-97, LLD754 / 13-98, LLD754 / 13-99, LLD754 / 14-00, LLD754 / 14-01, LLD754 / 14-02, LLD754 / 14-03, LLD754 / 14-04, LLD754 / 14-05, LLD754 / 14-06, LLD754 / 14-07, LLD754 / 14-08, LLD754 / 14-09, LLD754 / 14-10, LLD754 / 14-11, LLD754 / 14-12, LLD754 / 14-13, LLD754 / 14-14, LLD754 / 14-15, LLD754 / 14-16, LLD754 / 14-17, LLD754 / 14-18, LLD754 / 14-19, LLD754 / 14-20, LLD754 / 14-21, LLD754 / 14-22, LLD754 / 14-23, LLD754 / 14-24, LLD754 / 14-25, LLD754 / 14-26, LLD754 / 14-27, LLD754 / 14-28, LLD754 / 14-29, LLD754 / 14-30, LLD754 / 14-31, LLD754 / 14-32, LLD754 / 14-33, LLD754 / 14-34, LLD754 / 14-35, LLD754 / 14-36, LLD754 / 14-37, LLD754 / 14-38, LLD754 / 14-39, LLD754 / 14-40, LLD754 / 14-41, LLD754 / 14-42, LLD754 / 14-43, LLD754 / 14-44, LLD754 / 14-45, LLD754 / 14-46, LLD754 / 14-47, LLD754 / 14-48, LLD754 / 14-49, LLD754 / 14-50, LLD754 / 14-51, LLD754 / 14-52, LLD754 / 14-53, LLD754 / 14-54, LLD754 / 14-55, LLD754 / 14-56, LLD754 / 14-57, LLD754 / 14-58, LLD754 / 14-59, LLD754 / 14-60, LLD754 / 14-61, LLD754 / 14-62, LLD754 / 14-63, LLD754 / 14-64, LLD754 / 14-65, LLD754 / 14-66, LLD754 / 14-67, LLD754 / 14-68, LLD754 / 14-69, LLD754 / 14-70, LLD754 / 14-71, LLD754 / 14-72, LLD754 / 14-73, LLD754 / 14-74, LLD754 / 14-75, LLD754 / 14-76, LLD754 / 14-77, LLD754 / 14-78, LLD754 / 14-79, LLD754 / 14-80, LLD754 / 14-81, LLD754 / 14-82, LLD754 / 14-83, LLD754 / 14-84, LLD754 / 14-85, LLD754 / 14-86, LLD754 / 14-87, LLD754 / 14-88, LLD754 / 14-89, LLD754 / 14-90, LLD754 / 14-91, LLD754 / 14-92, LLD754 / 14-93, LLD754 / 14-94, LLD754 / 14-95, LLD754 / 14-96, LLD754 / 14-97, LLD754 / 14-98, LLD754 / 14-99, LLD754 / 15-00, LLD754 / 15-01, LLD754 / 15-02, LLD754 / 15-03, LLD754 / 15-04, LLD754 / 15-05, LLD754 / 15-06, LLD754 / 15-07, LLD754 / 15-08, LLD754 / 15-09, LLD754 / 15-10, LLD754 / 15-11, LLD754 / 15-12, LLD754 / 15-13, LLD754 / 15-14, LLD754 / 15-15, LLD754 / 15-16, LLD754 / 15-17, LLD754 / 15-18, LLD754 / 15-19, LLD754 / 15-20, LLD754 / 15-21, LLD754 / 15-22, LLD754 / 15-23, LLD754 / 15-24, LLD754 / 15-25, LLD754 / 15-26, LLD754 / 15-27, LLD754 / 15-28, LLD754 / 15-29, LLD754 / 15-30, LLD754 / 15-31, LLD754 / 15-32, LLD754 / 15-33, LLD754 / 15-34, LLD754 / 15-35, LLD754 / 15-36, LLD754 / 15-37, LLD754 / 15-38, LLD754 / 15-39, LLD754 / 15-40, LLD754 / 15-41, LLD754 / 15-42, LLD754 / 15-43, LLD754 / 15-44, LLD754 / 15-45, LLD754 / 15-46, LLD754 / 15-47, LLD754 / 15-48, LLD754 / 15-49, LLD754 / 15-50, LLD754 / 15-51, LLD754 / 15-52, LLD754 / 15-53, LLD754 / 15-54, LLD754 / 15-55, LLD754 / 15-56, LLD754 / 15-57, LLD754 / 15-58, LLD754 / 15-59, LLD754 / 15-60, LLD754 / 15-61, LLD754 / 15-62, LLD754 / 15-63, LLD754 / 15-64, LLD754 / 15-65, LLD754 / 15-66, LLD754 / 15-67, LLD754 / 15-68, LLD754 / 15-69, LLD754 / 15-70, LLD754 / 15-71, LLD754 / 15-72, LLD754 / 15-73, LLD754 / 15-74, LLD754 / 15-75, LLD754 / 15-76, LLD754 / 15-77, LLD754 / 15-78, LLD754 / 15-79, LLD754 / 15-80, LLD754 / 15-81, LLD754 / 15-82, LLD754 / 15-83, LLD754 / 15-84, LLD754 / 15-85, LLD754 / 15-86, LLD754 / 15-87, LLD754 / 15-88, LLD754 / 15-89, LLD754 / 15-90, LLD754 / 15-91, LLD754 / 15-92, LLD754 / 15-93, LLD754 / 15-94, LLD754 / 15-95, LLD754 / 15-96, LLD754 / 15-97, LLD754 / 15-98, LLD754 / 15-99, LLD754 / 16-00, LLD754 / 16-01, LLD754 / 16-02, LLD754 / 16-03, LLD754 / 16-04, LLD754 / 16-05, LLD754 / 16-06, LLD754 / 16-07, LLD754 / 16-08, LLD754 / 16-09, LLD754 / 16-10, LLD754 / 16-11, LLD754 / 16-12, LLD754 / 16-13, LLD754 / 16-14, LLD754 / 16-15, LLD754 / 16-16, LLD754 / 16-17, LLD754 / 16-18, LLD754 / 16-19, LLD754 / 16-20, LLD754 / 16-21, LLD754 / 16-22, LLD754 / 16-23, LLD754 / 16-24, LLD754 / 16-25, LLD754 / 16-26, LLD754 / 16-27, LLD754 / 16-28, LLD754 / 16-29, LLD754 / 16-30, LLD754 / 16-31, LLD754 / 16-32, LLD754 / 16-33, LLD754 / 16-34, LLD754 / 16-35, LLD754 / 16-36, LLD754 / 16-37, LLD754 / 16-38, LLD754 / 16-39, LLD754 / 16-40, LLD754 / 16-41, LLD754 / 16-42, LLD754 / 16-43, LLD754 / 16-44, LLD754 / 16-45, LLD754 / 16-46, LLD754 / 16-47, LLD754 / 16-48, LLD754 / 16-49, LLD754 / 16-50, LLD754 / 16-51, LLD754 / 16-52, LLD754 / 16-53, LLD754 / 16-54, LLD754 / 16-55, LLD754 / 16-56, LLD754 / 16-57, LLD754 / 16-58, LLD754 / 16-59, LLD754 / 16-60, LLD754 / 16-61, LLD754 / 16-62, LLD754 / 16-63, LLD754 / 16-64, LLD754 / 16-65, LLD754 / 16-66, LLD754 / 16-67, LLD754 / 16-68, LLD754 / 16-69, LLD754 / 16-70, LLD754 / 16-71, LLD754 / 16-72, LLD754 / 16-73, LLD754 / 16-74, LLD754 / 16-75, LLD754 / 16-76, LLD754 / 16-77, LLD754 / 16-78, LLD754 / 16-79, LLD754 / 16-80, LLD754 / 16-81, LLD754 / 16-82, LLD754 / 16-83, LLD754 / 16-84, LLD754 / 16-85, LLD754 / 16-86, LLD754 / 16-87, LLD754 / 16-88, LLD754 / 16-89, LLD754 / 16-90, LLD754 / 16-91, LLD754 / 16-92, LLD754 / 16-93, LLD754 / 16-94, LLD754 / 16-95, LLD754 / 16-96, LLD754 / 16-97, LLD754 / 16-98, LLD754 / 16-99, LLD754 / 17-00, LLD754 / 17-01, LLD754 / 17-02, LLD754 / 17-03, LLD754 / 17-04, LLD754 / 17-05, LLD754 / 17-06, LLD754 / 17-07, LLD754 / 17-08, LLD754 / 17-09, LLD754 / 17-10, LLD754 / 17-11, LLD754 / 17-12, LLD754 / 17-13, LLD754 / 17-14, LLD754 / 17-15, LLD754 / 17-16, LLD754 / 17-17, LLD754 / 17-18, LLD754 / 17-19, LLD754 / 17-20, LLD754 / 17-21, LLD754 / 17-22, LLD754 / 17-23, LLD754 / 17-24, LLD754 / 17-25, LLD754 / 17-26, LLD754 / 17-27, LLD754 / 17-28, LLD754 / 17-29, LLD754 / 17-30, LLD754 / 17-31, LLD754 / 17-32, LLD754 / 17-33, LLD754 / 17-34, LLD754 / 17-35, LLD754 / 17-36, LLD754 / 17-37, LLD754 / 17-38, LLD754 / 17-39, LLD754 / 17-40, LLD754 / 17-41, LLD754 / 17-42, LLD754 / 17-43, LLD754 / 17-44, LLD754 / 17-45, LLD754 / 17-46, LLD754 / 17-47, LLD754 / 17-48, LLD754 / 17-49, LLD754 / 17-50, LLD754 / 17-51, LLD754 / 17-52, LLD754 / 17-53, LLD754 / 17-54, LLD754 / 17-55, LLD754 / 17-56, LLD754 / 17-57, LLD754 / 17-58, LLD754 / 17-59, LLD754 / 17-60, LLD754 / 17-61, LLD754 / 17-62, LLD754 / 17-63, LLD754 / 17-64, LLD754 / 17-65, LLD754 / 17-66, LLD754 / 17-67, LLD754 / 17-68, LLD754 / 17-69, LLD754 / 17-70, LLD754 / 17-71, LLD754 / 17-72, LLD754 / 17-73, LLD754 / 17-74, LLD754 / 17-75, LLD754 / 17-76, LLD754 / 17-77, LLD754 / 17-78, LLD754 / 17-79, LLD754 / 17-80, LLD754 / 17-81, LLD754 / 17-82, LLD754 / 17-83, LLD754 / 17-84, LLD754 / 17-85, LLD754 / 17-86, LLD754 / 17-87, LLD754 / 17-88, LLD754 / 17-89, LLD754 / 17-90, LLD754 / 17-91, LLD754 / 17-92, LLD754 / 17-93, LLD754 / 17-94, LLD754 / 17-95, LLD754 / 17-96, LLD754 / 17-97, LLD754 / 17-98, LLD754 / 17-99, LLD754 / 18-00, LLD754 / 18-01, LLD754 / 18-02, LLD754 / 18-03, LLD754 / 18-04, LLD754 / 18-05, LLD754 / 18-06, LLD754 / 18-07, LLD754 / 18-08, LLD754 / 18-09, LLD754 / 18-10, LLD754 / 18-11, LLD754 / 18-12, LLD754 / 18-13, LLD754 / 18-14, LLD754 / 18-15, LLD754 / 18-16, LLD754 / 18-17, LLD754 / 18-18, LLD754 / 18-19, LLD754 / 18-20, LLD754 / 18-21, LLD754 / 18-22, LLD754 / 18-23, LLD754 / 18-24, LLD754 / 18-25, LLD754 / 18-26, LLD754 / 18-27, LLD754 / 18-28, LLD754 / 18-29, LLD754 / 18-30, LLD754 / 18-31, LLD754 / 18-32, LLD754 / 18-33, LLD754 / 18-34, LLD754 / 18-35, LLD754 / 18-36, LLD754 / 18-37, LLD754 / 18-38, LLD754 / 18-39, LLD754 / 18-40, LLD754 / 18-41, LLD754 / 18-42, LLD754 / 18-43, LLD754 / 18-44, LLD754 / 18-45, LLD754 / 18-46, LLD754 / 18-47, LLD754 / 18-48, LLD754 / 18-49, LLD754 / 18-50, LLD754 / 18-51, LLD754 / 18-52, LLD754 / 18-53, LLD754 / 18-54, LLD754 / 18-55, LLD754 / 18-56, LLD754 / 18-57, LLD754 / 18-58, LLD754 / 18-59, LLD754 / 18-60, LLD754 / 18-61, LLD754 / 18-62, LLD754 / 18-63, LLD754 / 18-64, LLD754 / 18-65, LLD754 / 18-66, LLD754 / 18-67, LLD754 / 18-68, LLD754 / 18-69, LLD754 / 18-70, LLD754 / 18-71, LLD754 / 18-72, LLD754 / 18-73, LLD754 / 18-74, LLD754 / 18-75, LLD754 / 18-76, LLD754 / 18-77, LLD754 / 18-78, LLD754 / 18-79, LLD754 / 18-80, LLD754 / 18-81, LLD754 / 18-82, LLD754 / 18-83, LLD754 / 18-84, LLD754 / 18-85, LLD754 / 18-86, LLD754 / 18-87, LLD754 / 18-88, LLD754 / 18-89, LLD754 / 18-90, LLD754 / 18-91, LLD754 / 18-92, LLD754 / 18-93, LLD754 / 18-94, LLD754 / 18-95, LLD754 / 18-96, LLD754 / 18-97, LLD754 / 18-98, LLD754 / 18-99, LLD754 / 19-00, LLD754 / 19-01, LLD754 / 19-02, LLD754 / 19-03, LLD754 / 19-04, LLD754 / 1